



**Landcare**  
Victoria Inc.

# 2026 Annual Report

**LANDCARE VICTORIA INC.**

We pay our respects to the Traditional Owners of the lands in Victoria.

We are inspired by the legacy of Victorian First Nations people, who have cared for the ecological systems that life depends upon for tens of thousands of years.

We recognise Traditional Owner rights to self-determination and to speak for and look after Country.



Chair's report	4
CEO message	5
Who we are	6
Delivering on our Strategic Goals	7
Impact measures	8
Our people	10
Partnerships and collaborations	16
Member services	18
Our projects	20
▲ Advocacy	21
▲ New Futures for Victorian Landcare	22
▲ Carbon Farming Outreach Program	24
▲ Advancing Landcare	26
▲ Events	28
Our communications	30
Treasurer's report	32
Financial report	33



Front Cover photo credit: Nature Nurture Photography - Shimu Rozario

**Note:** For ease of reference, we refer to Landcare Victoria Inc. as Landcare Victoria.

# Chair's report

Landcare has never been more vital - and 2025 marked a significant step forward for its future in Victoria.

In April, we proudly launched Landcare Victoria's Strategic Plan 2025 - 2027, setting an ambitious goal to double participation in community landcare over three years. The plan provides clear direction, focusing on strengthening support for the landcare community, deepening partnerships and championing the value of community-led environmental action. Building on the Landcare Plan for Victoria 2023 - 2033, it also reflects Landcare Victoria's growing leadership role at a time when demands on volunteers are increasing and strong coordination is more important than ever.

A highlight of the year was welcoming landcare and environmental volunteering groups to Parliament House in March for an event hosted by the Parliamentary Friends of Landcare. Over several days, more than 120 volunteers shared their stories and showcased on-ground achievements with Members of Parliament from across the political spectrum. Queens Hall was alive with conversation and connection, underscoring the scale and impact of community landcare. We thank Tom McIntosh MP, Melina Bath MP, Richard Welch MP and Martha Haylett MP for their support, along with (then) Environment Minister Dimopoulos and (then) Shadow Environment Minister Rowsell for their strong endorsement. The bipartisan support on display reflected the enduring spirit that has defined landcare in Victoria.

Throughout the year, Landcare Victoria continued its advocacy with the Victorian Government, particularly to secure sustainable funding for the Victorian Landcare Facilitator Program. The May State Budget delivered \$17.3 million over two years for Landcare and Coastcare programs, including a further two-year extension of the Facilitator Program. This investment secures around 90 regional jobs and supports more than 740 landcare and environmental volunteer groups delivering critical environmental outcomes across the state.

None of this work would be possible without the extraordinary dedication and commitment of our Board, Members Council and staff. Their passion, expertise, and generosity of time underpin everything we achieve, and I extend my deepest and most heartfelt thanks to each of them.

We are also profoundly grateful to our philanthropic partners, the Rendere Trust and the Upotipoton Foundation. Their generous support not only sustains our work, but meaningfully strengthens our organisational capacity, enabling us to grow, innovate and deepen our impact.

Our collaboration with the Department of Energy, Environment and Climate Action (DEECA) and the Victorian Landcare Team is deeply valued, providing a vital bridge between community knowledge and decision-making. It ensures community voices are genuinely heard and actively inform policy and program development, grounding initiatives in the realities of the communities they serve. We are equally grateful for the Australian Government's ongoing support through the National Landcare Network. Their sustained investment and collaboration strengthen our collective capacity and enable a coordinated, nationwide approach that amplifies community voices and drives lasting outcomes.



As we move forward, we are actively advancing initiatives designed to support and strengthen the landcare community, while expanding our impact, even in the face of an increasingly challenging economic and environmental landscape.

**Jane Carney**  
Chairperson

# CEO message

2025 was a significant year for Landcare Victoria, with strong progress across our programs, partnerships and advocacy. Our work continued to focus on strengthening the landcare community and supporting the thousands of volunteers who care for Victoria's land, water and biodiversity.

Key initiatives during the year included the New Futures for Victorian Landcare project, the Advancing Landcare capacity building program and the Carbon Farming Outreach Program. Together, these programs developed knowledge, strengthened collaboration and supported leadership across the state, enhancing the capacity of communities to respond to emerging environmental challenges.

Landcare Victoria also led a Partnerships Against Pests program, funded by DEECA. This statewide initiative brought together established pest management taskforces, Traditional Owner groups and national networks to build capacity and share knowledge in addressing priority invasive species challenges identified in the Landcare Plan for Victoria.

The New Futures for Victorian Landcare project reached an important milestone with the completion of its final two Landscape Action Plans, developed by the Heytesbury District Landcare Network and the Kiewa-Wodonga collective. This marked the conclusion of the three-year project, which engaged more than 1,300 participants across four pilot

regions. In total, four co-designed Landscape Action Plans were delivered, spanning 1.75 million hectares and demonstrating the value of coordinated, landscape-scale approaches to environmental stewardship.

We also continued to create opportunities for people to connect with nature and community action in new ways. In September, Landcare Victoria partnered with a range of organisations to deliver *Planting* at Federation Square, a major event that combined hands-on environmental activities with storytelling and celebration, supported by satellite planting events held across the Port Phillip and Westernport region.

It was also encouraging to see strong Victorian representation at the National Landcare Conference on the Gold Coast in October. We congratulate all Victorian finalists in the National Landcare Awards, with special recognition to Bryce Watts-Parker, Tavish Bloom and the Merri Creek Management Committee for their outstanding achievements.

Together, these achievements reflect the strength and resilience of Victoria's landcare community and the importance of continued investment in community-led environmental action. As we look ahead, Landcare Victoria remains committed to strengthening partnerships and supporting volunteers to deliver lasting outcomes for the state.

**Claire Hetzel**  
Chief Executive Officer



# Who we are

## ABOUT US

People are at the heart of what we do at Landcare Victoria.

We are a not-for-profit representative body made up of over 600 groups, engaging tens of thousands of community members. As the peak body for landcare in Victoria, we enable a grassroots movement that fosters collaboration to regenerate landscapes and address the challenges that we face around climate change, food security and biodiversity loss. We champion the critical role landcarers play in offering local solutions to global challenges, while enhancing community resilience and capacity.

## VISION AND PURPOSE

Our vision is for rich and diverse Victorian landscapes, supporting productive farming, healthy ecosystems and thriving communities.

We support landcare to be strong, connected and effective.



## OUR VALUES

Our values reflect the values of the Victorian landcare community:



### Grounded

in the community and knowledge of local landscapes.



### Empowering

individuals and communities to make a positive difference to their local landscapes.



### Respectful

of the knowledge of diverse groups of people with a connection to the land, including First Nations people.



### Collaborative

in our approach to achieving outcomes.



# Delivering on our Strategic Goals

## STRATEGIES

**1**  
**STRENGTHEN THE SUPPORT WE PROVIDE TO VICTORIAN LANDCARERS**

**2**  
**DO MORE WITH OTHERS**

**3**  
**MAKE THE CASE FOR COMMUNITY-LED ACTION**

## KEY ACTIVITIES

Enhancing the organisational capacity of our networks and groups

Building the skills and knowledge of landcarers

Unlocking the resources that landcare networks and groups need to thrive

Collaborating to deliver meaningful projects at scale

Partnering to ensure landcarers have access to the best tools and resources

Learning from and working with First Nations groups and individuals

Representing and advocating on behalf of landcarers

Demonstrating the value that landcare delivers

Showing how great landcare is

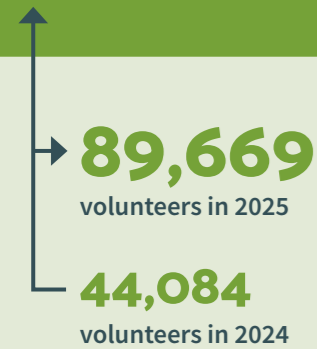
## FOUNDATIONS

Landcare Victoria has the resources, governance, people and culture it needs to deliver its work.

# Impact measures

## GOAL

To empower 120,000 Victorians to collectively build more resilient, biodiverse and productive landscapes by 2027.



In 2025, our members supported almost 90,000 Victorians to roll up their sleeves to build more resilient, biodiverse and productive landscapes.

That's more than double the participation in 2024 and means we are well on our way to achieving our goal of 120,000 volunteers by 2027.

We've also made significant progress on the strategies we're using to help make that goal a reality.

## 1 STRENGTHEN THE SUPPORT WE PROVIDE TO VICTORIAN LANDCARERS

We're doing this by:

### Enhancing the organisational capacity of our networks and groups

We supported member organisations to register as charities with the Australian Charities and Not-for-profits Commission (ACNC) and to become incorporated.



**300%**

Increase in member organisations registering as charities with the ACNC, representing 237 organisations



**21%**

Increase in members reporting they are incorporated compared to 2024, representing 66 organisations

### Building the skills and knowledge of landcarers

Our innovative programs and webinars helped us to strengthen our support for Victorian landcarers.



**4,335**

People engaged with Landcare Victoria webinars

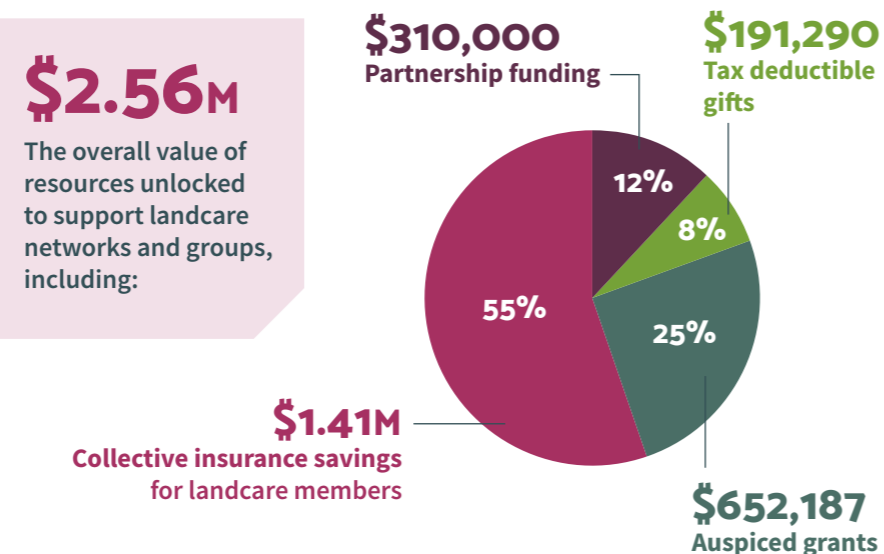


**25%**

Increase in carbon farming knowledge reported by Carbon Farming Outreach Program participants

### Unlocking the resources that landcare networks and groups need to thrive

Landcare Victoria unlocked significant resources to support landcare networks and groups, including partnership funding, tax deductible gifts for members and auspiced grants.



## 2 DO MORE WITH OTHERS

We're doing this by:

### Collaborating to deliver meaningful projects at scale

Landcare Victoria collaborated with a number of organisations to deliver important projects across the state.



**60+**

Local stakeholders engaged in the New Futures for Victorian Landcare Project



**100+**

Carbon Farming events delivered in partnership with 10 CMAs and Agriculture Victoria

### Partnering to ensure landcarers have access to the best tools and resources

Across the year we partnered with organisations from across the country to support the work of landcarers.

**40** Organisations partnered with to deliver tools and resources, including ACNC, CSIRO and ANU Sustainable Farms

### Learning from and working with First Nations groups and individuals

Landcare Victoria sought opportunities to learn from and collaborate with First Nations groups in 2025.

#### 2 Partnerships

Landcare Victoria partnered with the Duduroa Dhargal Aboriginal Corporation and the Dja Dja Wurrung Clans Aboriginal Corporation to present the Advancing Landcare Partnerships for Effective Pests and Weeds Knowledge program.

#### 2 Knowledge and skills engagement

In 2025, Landcare Victoria collaborated with the First People's Assembly of Victoria to support our Board and Members Council understand Treaty in Victoria. We also worked with the NLN and other State and Territory Landcare Organisations to support engagement between landcare and First Nations people.

## 3 MAKE THE CASE FOR COMMUNITY-LED ACTION

We're doing this by:

### Representing and advocating on behalf of landcarers

Landcare Victoria continued to call for what landcarers need to make their work possible in 2025.



**\$17.3M\***

Allocation in the 2025 State Budget to Landcare and Coastcare programs  
*\*over two years*



**450**

Volunteer hours Landcare Victoria's Members Council contributed to representing community landcare in Victoria in 2025

### Demonstrating the value that landcare delivers

In 2025, we clearly demonstrated landcare's contribution to the state, and our investment in on-ground action.



**591,550+**

Volunteer hours – estimated total volunteer time contributed during 2025 (contributing more than \$30 million to Victoria's economy\*)

*\* Based on the [Cost of Volunteering calculator](#)*



**\$31.2M+**

Amount landcare organisations collectively invested in delivering on-ground action

### Showing how great landcare is

We recognised and celebrated the achievements of the incredible people in our movement in 2025.

**120+**

volunteers showcased their on-ground achievements in Parliament House, as part of the Parliamentary Friends of Landcare event in March

**3**

of the nine National Landcare Awards handed out in September went to Victorians - an outstanding achievement

# Our people

## OPERATIONS & GOVERNANCE

Landcare Victoria is overseen by a volunteer skills-based Board, supported by a dedicated staff team, as well as a representative Members Council.

### Board

Landcare Victoria's volunteer skills-based Board oversees and steers the organisation by setting strategic direction and providing governance.

<b>Jane Carney</b>	Chair
<b>Paul Foreman</b>	Deputy Chair (Partnerships)
<b>Abi Smith</b>	Deputy Chair (Operations)
<b>Tiffany Inglis</b>	Secretary
<b>Ric Oldham</b>	Treasurer
<b>Leanne Jackman</b>	
<b>Mark Sutherland</b>	
<b>Kerri Robson</b>	
<b>Andrea Montgomery</b>	
<b>Rob Spittle</b>	



Photo credit: Karli Duckett

Thank you to these Board Members who completed their terms in May 2025.

<b>Alice Knight</b>
<b>Beth Ripper</b>
<b>Mark Feltrin</b>

### Staff Team

<b>Claire Hetzel</b>	Chief Executive Officer
<b>Anthony Gallacher</b>	Project Manager
<b>Amanda Grace</b>	Office Coordinator/Project Officer (Member Services)
<b>Sarah Vella</b>	Communications and Engagement Coordinator
<b>Ana Pimenta</b>	Landcare Development Coordinator
<b>Tahnee Burgess</b>	Program Coordinator
<b>Neha Concisom</b>	Administration Officer (to October 2025)



### Members Council

The Members Council is an advisory committee to the Landcare Victoria Board and provides the landcare community in Victoria with a mechanism to collaborate, share information, network and form a common view on issues facing the sector. The Council is representative of Landcare Victoria members and brings together landcarers who are diverse in the roles they fulfil and the personal skills they have, enabling engagement on key issues.

<b>Anthony Griffiths</b>	Chair (North East)
<b>Sophie Small</b>	Corangamite – Professional Landcarer (appointed November 2025)
<b>Beth Ripper</b>	East Gippsland (appointed May 2025)
<b>Michele Shugg</b>	East Gippsland – Professional Landcarer (appointed August 2025)
<b>Dawn Parker</b>	East Gippsland
<b>Jileena Cole</b>	Glenelg Hopkins – Professional Landcarer
<b>Tony Kent</b>	Goulburn Broken (appointed May 2025)
<b>Dan Walker</b>	Goulburn Broken – Professional Landcarer
<b>Andrew Borg</b>	North Central – Professional Landcarer (appointed August 2025)
<b>John Rowlands</b>	North Central
<b>Julie Hind</b>	North East
<b>Irene Lewis</b>	North East
<b>Penny Raleigh</b>	North East – Professional Landcarer
<b>Ross Colliver</b>	Port Phillip and Westernport
<b>Susan Anderson</b>	Port Phillip and Westernport
<b>Linda Sijpkes</b>	Port Phillip & Westernport – Professional Landcarer (appointed November 2025)
<b>Ian Hill</b>	West Gippsland
<b>Dave Bateman</b>	West Gippsland – Professional Landcarer
<b>Alicia Merriam</b>	Wimmera – Professional Landcarer
<b>Elia Pirtle</b>	Wimmera – Professional Landcarer

Thank you to the following Members Councillors who completed their term in May 2025.

<b>Kristy Stewart</b>	Corangamite – Professional Landcarer
<b>Annette Lambert</b>	Mallee - Professional Landcarer
<b>Sandy McKenzie</b>	Goulburn Broken

### Working Groups

Thank you to the following landcare community members who have participated in Landcare Victoria working groups in addition to Board and Members Council representatives in 2025.

<b>Christine Brooke</b>	Governance Working Group
<b>Jo Vincent</b>	Victorian Waterway Management Strategy Collaborative Working Group
<b>Patrick O'Halloran</b>	Victorian Waterway Management Strategy Collaborative Working Group
<b>Will Sanson</b>	Victorian Waterway Management Strategy Collaborative Working Group
<b>John Daley</b>	Victorian Waterway Management Strategy Collaborative Working Group

## MEMBERS AND VOLUNTEERS

**Landcare Victoria welcomed 24 new members throughout 2025, including landcare groups, friends groups, gardens for wildlife groups, field naturalist clubs and a variety of others.**

We're excited to have these organisations on board as new members and look forward to supporting them to achieve our shared objectives for years to come.

The landcare community in Victoria continues to grow, with our members reporting strong increases in their own membership numbers in the 2025 Membership Renewal Census.



**89,669**  
Participants in 2025



**655**  
Member organisations

The total number of members reported across all responding organisations increased by 5,735 to 27,777, with the average number of members per group/network now sitting at 46.9. We estimate the number of individuals with landcare memberships in Victoria to be 36,184 – up 27.6% on the previous year. We congratulate our members on their excellent work in retaining existing members and attracting new ones to join the fold.

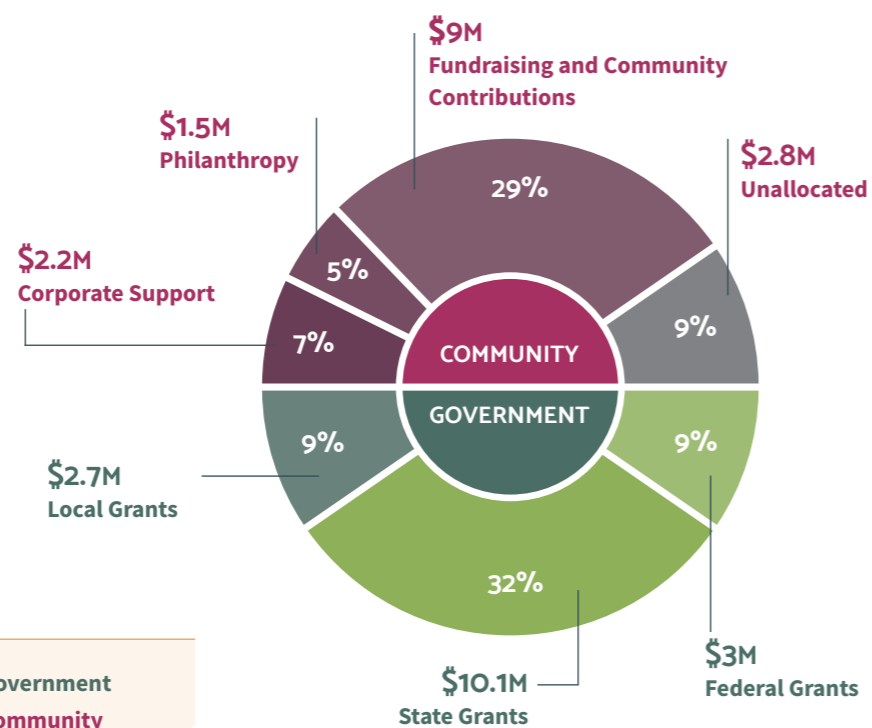
An uplift in governance and organisational maturity was evident this year across our membership cohort. This includes a significant increase in the number of incorporated associations and companies, with 379 members incorporated (representing a 21% increase since the previous census) and 237 member organisations confirmed to have registered with the Australian Charities & Not-for-profits Commission (a massive 300% increase) by the end of the year. We are pleased that many of our members acknowledged they were able to navigate the complexities of preparing for and undertaking these registration processes with guidance and support from Landcare Victoria.

Landcare in Victoria is a complex, inter-connected system, with most groups receiving some level of support through engagement with local, regional and statewide networks. Our 66 member networks reported supporting a total of 816 independent subgroups (an average of 12.4 per network, increasing from 9.1 in 2024), indicating strong collaborative ties between environmental volunteering organisations in Victoria and increasing network capacity.

### Income sources for landcare in Victoria (2025)

In 2025, data reported from 592 environmental organisations in Victoria showed that community and government sources are equally important to drive the success of community action to create healthier landscapes and resilient communities.

The contributions by all levels of government to support the Victorian landcare ecosystem are matched by non-government sources - including philanthropy, corporate sponsorships and donations, fundraising, membership fees, sales and provision of contracted services by landcare groups and networks.



**\$31,654,197**  
Total income reported

▶ 50% from Government

▶ 50% from Community

### Member statistics as derived from the 2025 Census

Item	2025	2024
Total number of member organisations surveyed	655	649
Total number of member organisations responded	592	561
Environmental groups	526	503
Environmental networks	66	58
Unincorporated associations	213	248
Incorporated associations or NFP companies	379	313
Registered charities	316	79
Total reported annual income	\$31,654,197	\$33,229,032
Average annual income	\$53,470	\$59,232
Total reported expenditure	\$31,782,293	\$30,133,205
Average annual expenditure	\$53,686	\$53,713
Total reported memberships per environmental organisation ●	27,777	22,042
Average reported memberships per organisation ●	46.9	39.3
Average number of independent subgroups per network organisation ●	12.4	9.1
Total reported individual memberships (one person per membership)	19,370	15,716
Total reported multi-person memberships (two or more people per membership)	8,407	6,326
Estimated number of people with landcare memberships ●	36,184	28,368
Total number of estimated participants over 12-month period	89,669	44,084
Total volunteer time estimated to have been contributed over 12-month period (people hours)	591,559	497,027

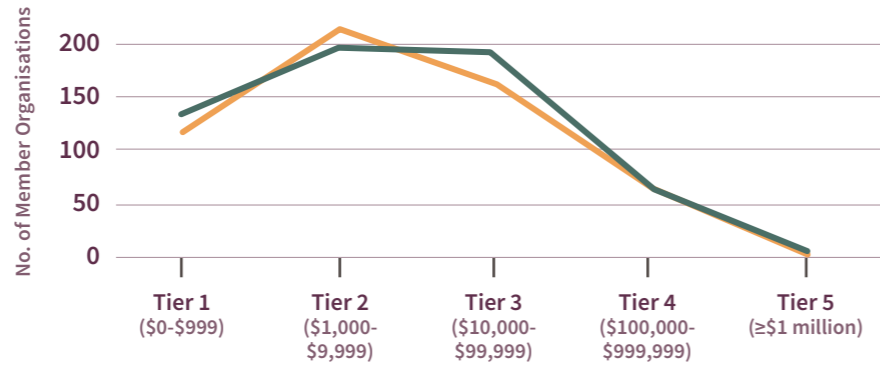
- Memberships may be individual members or entities containing multiple individuals depending on group structure
- Reported individual memberships + (Reported multi-person memberships x 2) = Estimated number of people with membership of an environmental organisation
- Independent subgroups are environmental organisations that are supported by or members of a network organisation



### Distribution of members

#### By Landcare Victoria membership tier

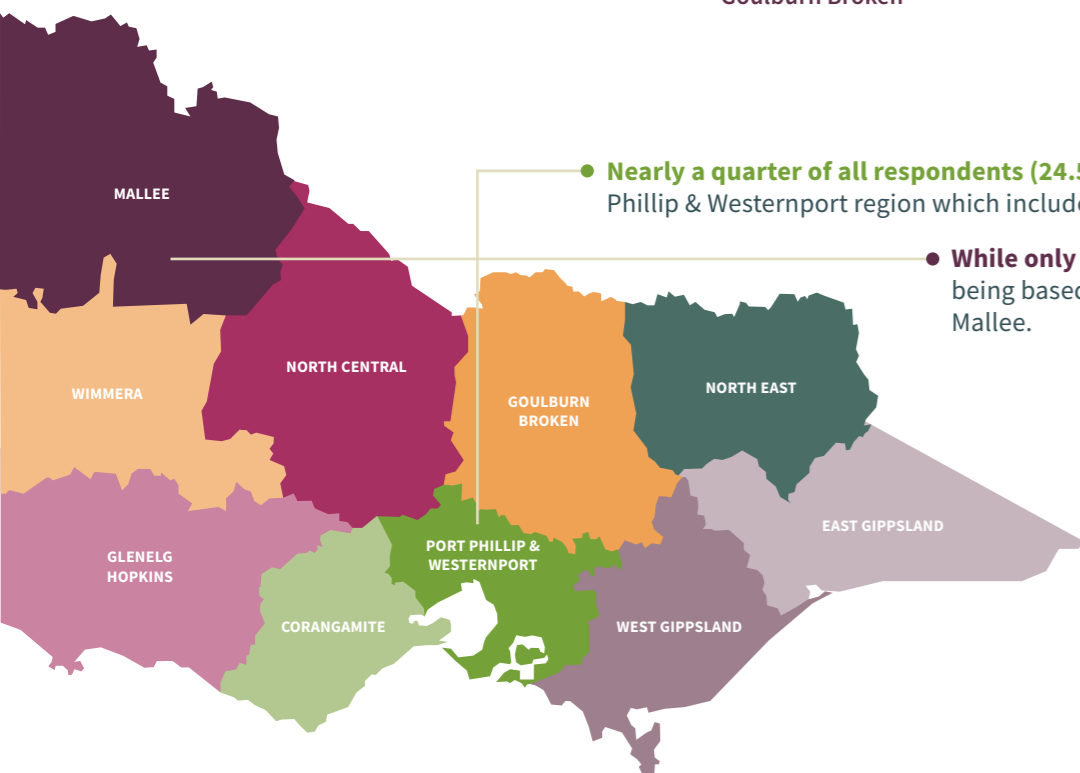
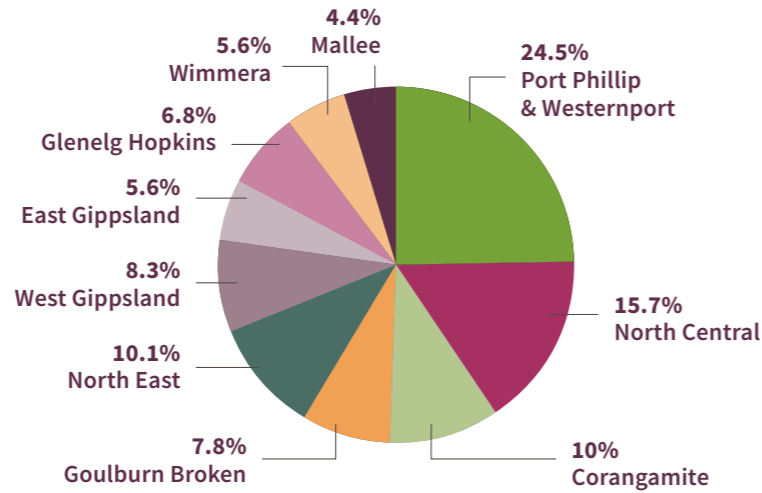
Landcare Victoria members are assigned to one of five membership tiers each year, based on their reported annual expenditure. This reflects the diversity of scale covered by our membership, from small groups to large organisations.



	Tier 1 (\$0-\$999)	Tier 2 (\$1,000-\$9,999)	Tier 3 (\$10,000-\$99,999)	Tier 4 (\$100,000-\$999,999)	Tier 5 (≥\$1 million)
Members 2025	130	198	195	66	3
Members 2024	118	214	162	65	2

#### By Victorian catchment region

Environmental volunteering organisations operate throughout Victoria. Our data indicates a correlation between the population of each catchment region and the number of our members and networks based there.



● **Nearly a quarter of all respondents (24.5%)** operate primarily in the Port Phillip & Westernport region which includes the Melbourne metro area.

● **While only 4.4%** of members reported being based in the more sparsely-populated Mallee.

### Volunteers

Landcare Victoria acknowledges the outstanding efforts of volunteers, without which landcare would not exist. We thank you all whole-heartedly for dedicating your time, energy and skills towards the protection and enhancement of Victoria’s natural environment.

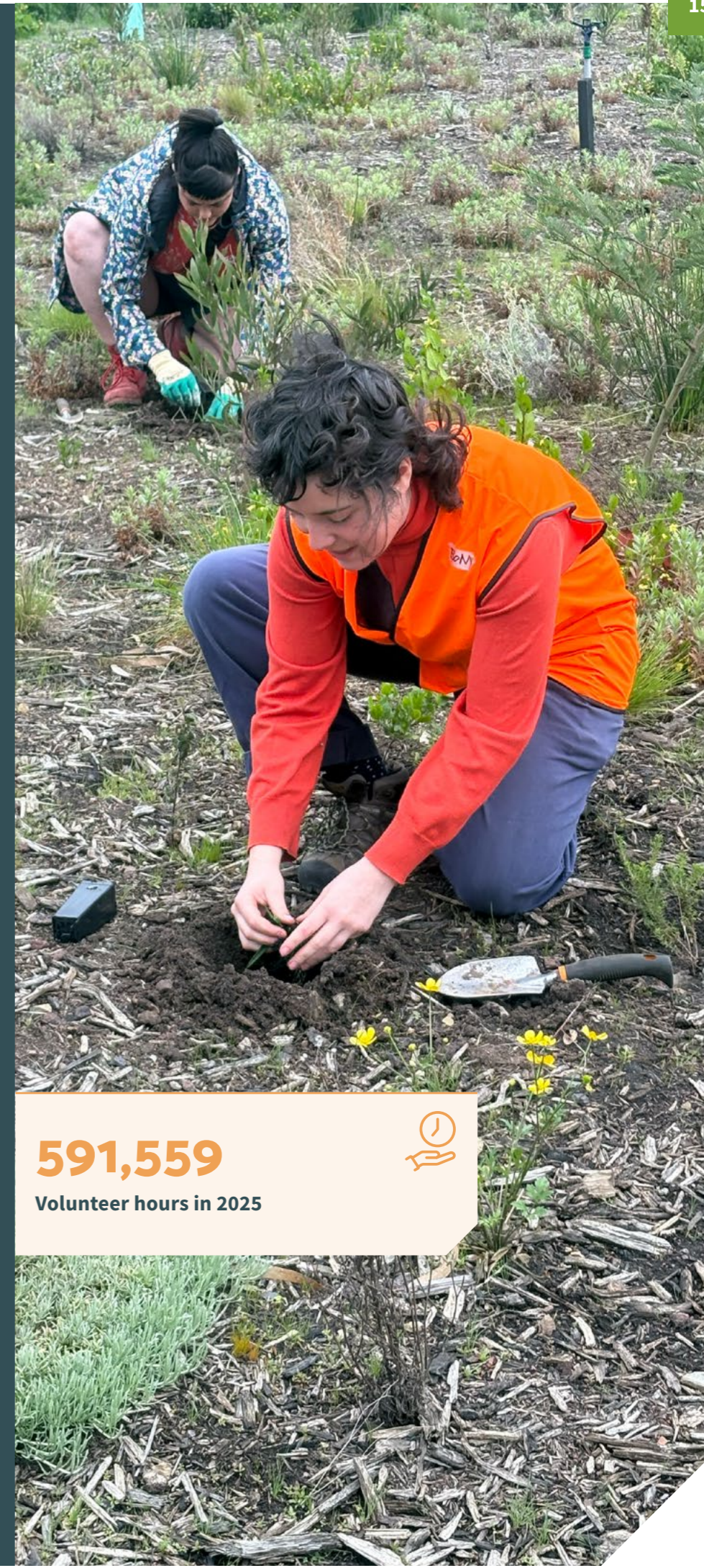
Incredibly, our members have reported a doubling in volunteer participation – from 44,084 participants in 2024 to 89,669 participants in 2025 – with total estimated time contributed by volunteers also increasing by 19% to a staggering 591,559 hours.

While it is impossible to quantify the true value of landcare, we estimate the individuals volunteering for our member organisations in 2025 delivered an economic contribution of more than \$30 million to the state, based on a monetary value of \$52.19/hour of volunteer work\*. With more people volunteering for the environment than ever before, the future of Victoria’s unique landscapes, flora and fauna is looking bright.

Volunteers also play an essential role in the daily operations of Landcare Victoria itself. Our volunteer board of directors and members council provide leadership, insight and strategic direction to guide the organisation.

We are especially grateful to those who have taken on additional roles in 2025, including participating in our Collaborative Working Groups, Governance Working Group and other committees that strengthen the voice and impact of Landcare Victoria. Your contribution is helping shape the future of community-led environmental care in Victoria.

\* Based on the [Cost of Volunteering calculator](#)



# 591,559

Volunteer hours in 2025



# Partnerships and collaborations



Partnerships and collaborations are at the heart of landcare's longevity and success. We have continued to strengthen existing relationships, build new partnerships and expand our reach across Victoria with the following organisations.



National  
Landcare  
Network

## National Landcare Network (NLN)

Through the Australian Government's Natural Heritage Trust, the Department of Agriculture, Fisheries and Forestry and the Department of Climate Change, Energy, the Environment and Water have invested in the NLN. Landcare Victoria and other state and territory landcare organisations are working together with the NLN to deliver an integrated approach to ensure that community landcare remains a dynamic and inclusive nationwide community movement.

## Department of Energy, Environment and Climate Action (DEECA)

Landcare Victoria has continued a very positive partnership with DEECA, coordinating landcare communication, capacity development and strategic statewide activities in partnership with the Community Programs and Partnerships team. Landcare Victoria has been collaborating with Agriculture Victoria in support of the Carbon Farming Outreach Program for the state in conjunction with the Catchment Management Authorities.

## Catchment Management Authorities (CMAs)

With funding support from DEECA and the Australian Government, CMAs play a vital role in supporting landcare. Landcare Victoria continued positive working relationships with the CMAs in each region and collectively, through an updated memorandum of understanding and action plan with VicCatchments.



## Who supports us

We're grateful to the many people who chip in at any level to support the work we do for landcarers in Victoria. Some of our funders include:

**The Rendere Trust** (Phillipson family) and **Upotipotpon Foundation** (Crothers family) for their continued support of our organisation's core capacity development needs

**The Natural Resources Conservation Trust** and the **Ian Potter Foundation** for their visionary investment in the New Futures for Victorian Landcare pilot project.



Photo credit: Karli Duckett

Thank you to the following collaborators and partners for their contributions:

ANU Sustainable Farms
Australian Charities and Not-for-Profit Commission
Australian Taxation Office
Benefolk
BUPA
Calxa
Creative Climate
CSIRO
Currie Communications
Dja Dja Wurrung Clans Aboriginal Corporation
Duduroa Dhargal Aboriginal Corporation
Ends of the Earth Consulting
Ethical Design Co.
First Peoples Assembly of Victoria
Infoxchange
Landcare Australia Ltd
Landscape Finance Lab
Maddocks
Melbourne Arts Precinct Corporation
Melbourne Water
National Feral Cat and Fox Management Coordination
Natural Resources Conservation Trust
Obliqua
Regen Farmers Mutual
Rural People Co.
Seeding Victoria
The Ian Potter Foundation
Thread Consulting
VicReturn (Container Deposit Scheme Victoria)
Victorian Deer Control Community Network
Victorian Environment Friends Network
Victorian Gorse Taskforce
Victorian Rabbit Action Network
Victorian Serrated Tussock Working Party

To find out more about how you can financially support our work, go to [landcarevictoria.org.au/donate](https://landcarevictoria.org.au/donate).

## OUR DONORS

*Landcare Victoria provides critical backbone support to landcare networks and groups across the state. While some of this work is supported by government funding, that investment alone is not enough to support landcarers at scale – or in the timeframe our landscapes and communities require.*

That's where our growing donor community comes in. We are incredibly grateful to those who financially support our work through monthly donations, one-off or annual gifts, or by considering a gift in their Will.

In 2025, we raised more than \$80,000 from individual donors as well as trusts and foundations. This included vital support for our Twitchathon campaign, and the dedicated cohort collecting cans and bottles to support us through the Victorian Container Deposit Scheme.

Every donation makes a tangible difference to the level of support we provide to our members. It's this funding that enables us to provide our members with affordable insurance, and to manage or auspice their grants. It also ensures we can provide the training and professional development they need.

And it's how we make sure everyone – including policy decision-makers – understands the value of landcarers and what they need to continue to care for the landscapes and people around them into the future.

**We thank our donors for supporting the landcare ethos and recognise the unique role that landcare can play in our state. We value your contribution to the landcare movement and appreciate your continued support of our organisation.**

# Member Services

## INFORMATION AND ADVICE

Every week our small but dedicated Member Services team responds to dozens of calls, emails and online enquiries, providing a range of supports and referrals to help people get answers to their questions about landcare. In 2025, we supported thousands of landcare committee members, volunteers and staff, along with farmers, landholders, stakeholders and members of the public, helping them engage with landcare and access relevant information and advice.

This has included referrals to local landcare organisations, sharing of internal and third-party specialist resources, landcare committee governance support and guidance, provision of land management information and stakeholder engagement.

## DONATIONS SERVICE

Landcare Victoria's Donations Service opens a pathway for our members to access support from donors who require their donation to be tax-deductible, without requiring member organisations to become endorsed by the Australian Tax Office as Deductible Gift Recipients (DGRs). By accepting gifts into our Gift Fund from individuals and organisations who wish to support our members and making subsequent donations to those members from the Fund, Landcare Victoria allows landcare groups and networks to benefit from our DGR-endorsement, utilising it to boost their own fundraising efforts.

Use of the Donations Service continues to grow, with 65 organisations registered by the end of 2025, representing a 12% increase in the number of participating members compared to 2024. Throughout the year, Landcare Victoria received tax-deductible gifts in support of members, totalling an incredible \$191,290.

Members may utilise donations received through Landcare Victoria's Gift Fund as they see fit in furtherance of their environmental purposes, providing Victorian landcare organisations with a much-needed additional source of discretionary funding to cover operational costs.

## INSURANCE SERVICE

Through the Insurance Service, Landcare Victoria provides insurance coverage for its members to support safe operations and enable groups to participate in landcare activities with confidence. The organisation maintains three core insurance policies - Public Liability, Voluntary Workers Personal Accident, and Association Liability - with premium and management costs shared across financial members. Landcare Victoria estimates that this insurance coverage collectivity saved its member organisations \$1.41m in 2025. This calculation is based on assessment of value compared to the cost of obtaining three insurance policies independently of Landcare Victoria, quoted by Aon as \$3150 per group, based on the profile of a small landcare organisation.

Insurance coverage for 2025-26 was again secured through Aon Risk Services Australia. The insurance program was renewed at a higher cost than the previous year, reflecting a general increase in insurance premiums across the sector.


The insurance coverage obtained is designed to support a broad range of landcare and related activities relevant to most member groups. Available at an additional cost and subject to application, Landcare Victoria can provide additional insurance coverage for fire-related activities, events for over 250 people and a Professional Indemnity extension for landcare professionals engaged by Landcare Victoria members. The continuation of fire activity coverage has helped remove a longstanding systemic barrier, enabling members to more effectively engage with Traditional Owner organisations in support of cultural fire practices and to undertake cool burning programs.

No new potential claims were lodged in 2025 in relation to volunteer injuries sustained during events. In addition, risk management guidance and support materials for member groups were developed during 2025 and are now available on the Landcare Victoria website.

## AUSPICING SERVICE

One of the key benefits of membership with Landcare Victoria is access to grant sponsorship (auspice) support for landcare-related activities via the Auspicing Service. This service is particularly valuable for unincorporated members, enabling them to seek and manage grant funding that would otherwise be unavailable to them. In 2025, 56 members accessed this support, with the total value of auspiced grants amounting to \$652,187. This includes \$72,457 in grants managed by Landcare Victoria, with the remaining amount self-administered grants.

Significant auspiced projects that ran in 2025 include 'Platypus eDNA Project in the Ovens River Catchment' by the Ovens Landcare Network, 'Lalbert Landcare aim for collaborative pest management and biodiversity leadership' by Lalbert Landcare Group, and 'Increasing on-farm biodiversity of the Cundare Duverney area through revegetation' by Cundare Duverney Landcare Group.

**\$191,290** 

**Tax deductible gifts supporting members**

**\$1.41M** 

**Collective insurance savings for landcare members**

**\$652,187** 

**In auspiced grants**

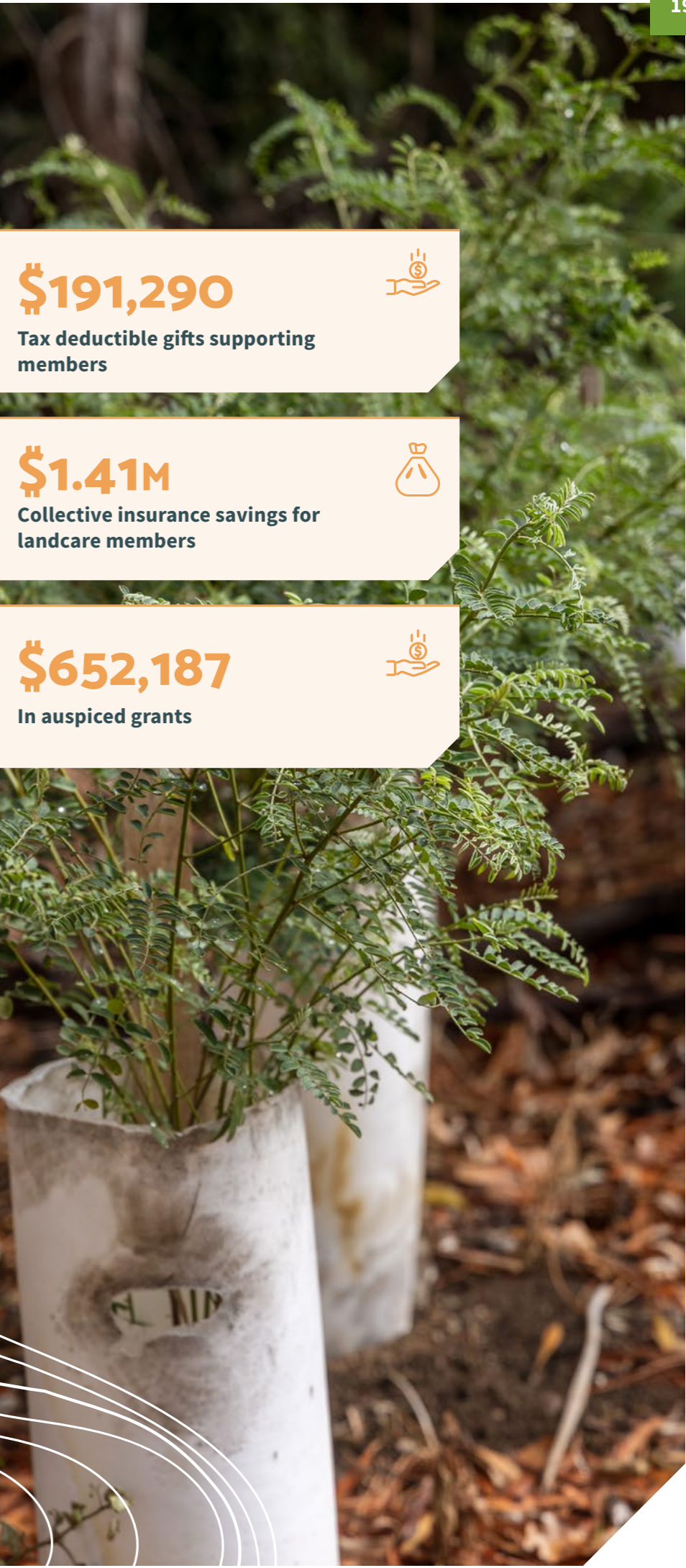


Photo credit: Karli Duckett

# Our projects

## Advocacy



**\$17.3M** 2025 State Budget allocation

## New Futures for Victorian Landcare



**60+** Local stakeholders engaged

## Carbon Farming Outreach Program



**87%** Average event satisfaction rating

## Advancing Landcare



**1,070** Webinar participants

## Events



**10,400** Native tubestock planted in one day

Photo credit: Nature Nurture Photography - Shimu Rozario

## PROJECT

# Advocacy

### VICTORIAN LANDCARE FACILITATOR PROGRAM ADVOCACY

Landcare Victoria prepared the "Fair go for Landcare Facilitators - Funding proposal for the Victorian Landcare Facilitator Program" with pro-bono support from Deloitte, which was mobilised throughout 2025. Additionally, Landcare Victoria continues to advocate to DEECA for the formal release of the Victorian Landcare Facilitator Program review, so that feedback can be provided to the Victorian landcare community.

Landcare Victoria welcomed the \$17.3 million over two years, allocated in the State Budget (May), for Landcare and Coastcare volunteer programs, which included a further two-year extension for the Victorian Landcare Facilitator Program.

In the second half of 2025, with the support of Thread Consulting, we developed our 2026 Election Prospectus, which calls on all parties to commit to consistent, reliable, adequate investment over four years to secure the future of community-led landcare in Victoria – from the essential funding needed to maintain operations through to the higher investment required to grow and transform the movement.

Landcare Victoria's CEO and Board will continue to meet with all sides of government throughout 2026 and beyond, to ensure longevity for the next 40 years of landcare.

### PARLIAMENTARY FRIENDS OF LANDCARE

The Victorian Parliamentary Friends of Landcare (VPFL) gathered in May 2025 for a wonderful multi-day event, bringing together policymakers, landcare champions and industry stakeholders, in conjunction with the Victorian Environment Friends Network.

This event provided an opportunity to celebrate the critical role of landcare and environmental volunteers in supporting both urban and regional communities.

The Victorian Parliamentary Friends of Landcare is co-convened by Member for North-Eastern Metropolitan Region Richard Welch and Member for Ripon Martha Haylett, with Member for Eastern Victoria Tom McIntosh serving as secretary. These advocates for landcare spearhead the cross-partisan group, which has around 35 members from across the political spectrum, and includes members from Labor, Liberal, National and Greens parties.

Through the VPFL, many landcare organisations have been able to host an MP at their event or have been invited to attend events held by MPs. For example, during Landcare Week (August) Gecko CLaN held a bake-off, inviting their local state and federal MPs to attend. Also in Landcare Week, Martha Haylett MP hosted a special morning tea for landcare volunteers in her electorate - to say a big thank you for putting in countless hours to better the local environment.

PROJECT

# New Futures for Victorian Landcare

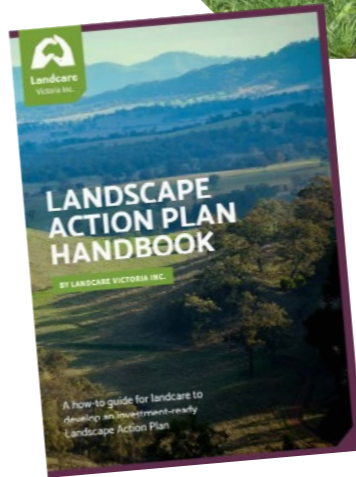
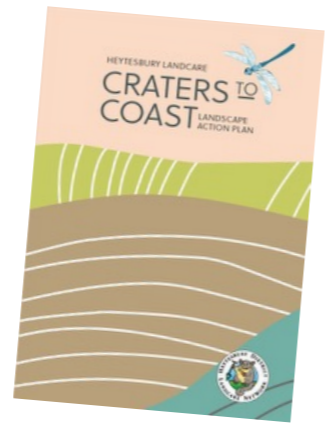
*'New Futures for Victorian Landcare' was a pilot project designed to support landscape planning and the participation of the landcare community in emerging investment and environmental markets.*

The project emphasised the development of a comprehensive landscape vision and the identification of investment opportunities, ensuring meaningful environmental and societal outcomes.

2025 saw two Round 2 pilots undertake a revised methodology. The program included a series of stakeholder and planning workshops, training modules and farm assessments with pilot landholders in their area, to explore individual opportunities and inform development of broader landscape opportunities. Each landscape was led by a local Working Group, supported by a Landscape Coordinator and Workshop Facilitator, with expert input from project partners and local stakeholders.

Kiewa Catchment Landcare Groups and Wodonga Urban Landcare Network - 'New Futures Kiewa-Wodonga' - launched their Landscape Action Plan in November 2025 and Heytesbury District Landcare Network - 'Craters to Coast' - launched their Landscape Action Plan in December 2025.

Evaluation findings from the New Futures for Victorian Landcare project demonstrate that landcare networks can play a strategic role in landscape-scale planning, coordination and investment readiness when supported by structured methodology, facilitation and multi-sector partnerships. There is strong evidence that the methodology developed and applied across four pilot landscapes represents a meaningful shift in ways of working.



*The Landscape Action Plan Handbook is a culmination of the three-year New Futures for Victorian Landcare project and presents the key principles and steps that landcare organisations can undertake to develop a Landscape Action Plan for their area.*

“For me, that was the essence of change: moving from ‘what can I do on my block?’ to ‘what can we achieve as a collective?’ Through having a variety of different people in the group from the local area, there was an uncovered need that could be solved with the group support rather than, ‘we’ve got an idea and we’re trying to find a market for it. We actually found a need in a local area, which I think is a better business model.’”

-Most Significant Change Interviewee

“It shows how co-design and collective learning unlock innovative, locally tailored solutions that bridge production and environmental outcomes. It wouldn’t have happened without the program.”

-Most Significant Change Interviewee



Photo credit: Mary-Anne Scully



Photo credit: Doolan Farms, Heytesbury

### Project outcomes

Round 2 pilot engagement and project outputs:

**2** Landscape Action Plans developed

**9** Landscape strategies identified

**20** Pilot landholders participating

**60+** Local stakeholders engaged

**330** Webinar engagements

Landcare Victoria and project partners are grateful for the funding support for this project from The Ian Potter Foundation and the Natural Resources Conservation Trust.

## PROJECT

# Carbon Farming Outreach Program

In 2025 the 10 CMAs, Agriculture Victoria and Landcare Victoria delivered over 100 Carbon Farming Outreach Program (CFOP) events across the state, in partnership with other organisations, including landcare groups.

These events were aimed at helping farmers and landcarers understand sustainable farming practices and the benefits of healthy environments.

Workshops, webinars and events have focused on a diverse range of topics ranging from planting trees on farms to soil pits and supply chain opportunities. Across the year, 5,426 people attended events, with 2,703 Victorians attending in-person workshops and farm walks and more than 2,900 people viewing Landcare Victoria webinars. Collectively, this audience is double the size of program-wide targets, with event delivery continuing until the end of March 2026.

Event feedback shows that attendees were more confident and felt empowered after attending a CFOP event. Almost

half of attendees indicated that they were going to take further carbon farming actions on their own properties, most commonly planting trees and calculating on-farm emissions.

Workshops run in partnership with landcare groups reported higher learnings and satisfaction than those without local partnerships. Working with communities gave an understanding of community needs and locally relevant opportunities.

More than a dozen experts delivered events across the state. Those who could speak about their own experience as farmers or case studies of on-farm benefits were the most effective presenters. While many farmers distrust carbon farming projects, many are open to increasing trees on farms or improving soil health. Especially

when emphasising the co-benefits and productivity gains from carbon farming activities.

Delivery designed for landcare facilitators also began in November 2025. These events were aimed at supporting landcare staff to support their roles with tailored training held in the Mallee and an online Community of Practice beginning for 40 facilitators from across the state.

The Carbon Farming Outreach Program is delivered with funding support from the Australian Government, through the Department of Climate Change, Energy, Environment and Water under the National Carbon Farming Outreach Program. The program is delivered through a partnership between Agriculture Victoria, the 10 Catchment Management Authorities and Landcare Victoria.



Photo: In-paddock learning at a Yan Yan Gurt farm with Andrew Stewart



Photo: Carbon Calculators workshop with Lismore Land Protection Group and Corangamite CMA

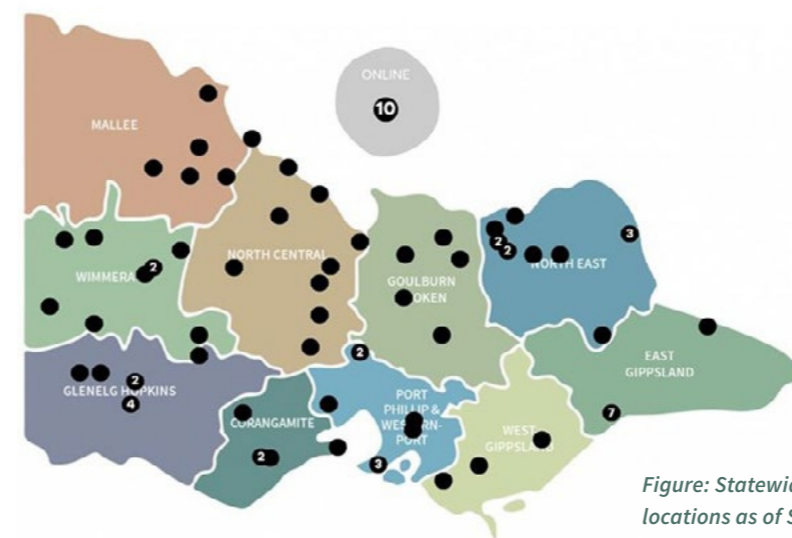


Figure: Statewide event locations as of September 2025. Credit AgVic

## CASE STUDY

## YAN YAN GURT FARM WALK

The Stewart family began planting trees on their property decades ago, to deal with salinity. Their 230ha property supports 1,300 breeding ewes who produce 1,600 – 1,800 lambs annually. More than 55,000 trees and shrubs have been planted across 42ha including 22ha of agroforestry and 20ha of biodiverse plantings.

Facilitated by the Wimmera and Corangamite CMAs, the Yan Yan Gurt Farm Walk saw a group of around 20 people guided through the property by Andrew Stewart, to look at how plantings have been integrated into the working farm. Almost 20% of the property is under tree for a range of different functions. Different agroforestry plantations are scattered along creeks and shelterbelts. Oaks have recently been planted near the house as part of a fire management strategy, banksias and native flowers offer another income stream, and shelterbelts provide shelter and shade for livestock. Attendees also learned about the farm's emissions profile from Dr Hugh Stewart.

Active members of the Otways Agroforestry Network, the Stewart family runs events on their property to help others learn from their experience. Nearby, the Upper Barwon Landcare Network has also rolled out a Resilient Farming Course to local farm businesses, that will expand across the state in 2026.

“Focusing on industry best management practices that improve your productivity, sustainability and efficiency whilst also contributing to lowering your emissions continue to be a good way to engage farmers.”


–CFOP participant

### Project outcomes


CFOP project engagement and project outputs:

 **100+**  
Events across  
Victoria

 **5,426**  
Total attendees

 **25%**  
Increase in  
carbon farming  
knowledge

 **8.7/10**  
Average event  
satisfaction rating

 **46%**  
Likely to take  
carbon farming  
action

 **2,935**  
Webinar  
engagements

 **40**  
Landcare  
Facilitators  
engaged in  
Community of  
Practice events

PROJECT

# Advancing Landcare

*The Advancing Landcare Program helped strengthen Victorian landcare groups by building technical knowledge, leadership and collaboration.*

Key initiatives included training and resources for pest and weed management, fundraising support through the Container Deposit Scheme, and guidance on new income tax reporting requirements. These projects improve capability, foster partnerships and help groups to operate more effectively and sustainably.



## GOVERNANCE SUPPORT FOR VICTORIAN LANDCARE

Throughout 2025, Landcare Victoria continued to provide assistance to landcare and environmental volunteer organisations to meet income tax concession requirements based on changes to Australia Tax Office (ATO) reporting for not-for-profits. This project was generously supported by DEECA.

Engagement from Victorian environmental organisations was significant, with hundreds of group and network contacts participating in the available information sessions, webinars and support

appointments - or reaching out directly via phone/email. Most of those who chose to engage with Landcare Victoria on this issue have since registered as a charity or taken steps towards compliance.

There has been a 300% increase in member organisations registering as charities with the Australian Charities and Not for Profit Commission (ACNC) throughout 2025, representing 237 groups and networks that have undertaken the necessary steps to be endorsed as income tax exempt.



## BUILDING SKILLS AND KNOWLEDGE

The Advancing Landcare Partnerships for Effective Pests and Weeds Knowledge project aimed to strengthen collaboration and strategic approaches across the state. It achieved this by focusing on building the capacity and leadership of the landcare community through expert-led training, resources and peer-to-peer learning. Landcare Victoria successfully delivered all planned activities, including three educational webinars on foxes, rabbits and risk management, supported by practical case studies and a suite of fact sheets. The project strengthened partnerships with key stakeholders, achieved strong engagement and positive participant feedback and increased knowledge, collaboration and confidence among landcare groups, with webinar recordings continuing to extend the project's reach.

## UNLOCKING RESOURCES - INCOME DIVERSIFICATION

Landcare Victoria partnered with VicReturn to support Victorian landcare groups to raise funds through the container deposit scheme, while contributing to a cleaner environment. The partnership focused on building group capacity through educational webinars and providing practical support, including collection bags and fundraising resources. It also recognised and promoted the efforts of landcare groups in reducing litter, encouraging responsible recycling, and supporting Victoria's transition to a circular economy. The partnership included a competition, which saw VicReturn dollar-match the top ten eligible groups based on container collections up to \$10,000.

### FEEDBACK

Feedback from those who engaged with Landcare Victoria for guidance was predominantly positive. Members and non-members alike expressed appreciation that someone was available to answer their questions and guide them through the process of becoming compliant with the ATO's requirements.

While some organisations are yet to act towards becoming income tax exempt, the legacy information and products from this project will remain available to support those groups moving forward.

“ Thank you for helping us with our ACNC registration. We've been approved. Thanks for everything you do.”

“ Well, we are registered with ACNC! Yay! But to be proper, thank you so much for Landcare Vic for your support and guidance.”

“ I wanted to pass on some good news. In the space of a fortnight, [our Friends group] has progressed through incorporation, updating ABN to reflect incorporation and is now registered with the ACNC... BTW thanks for your webinars, which I watched twice, and all the fact sheets that helped us get through this fairly painlessly.”

### Project outcomes

**300%**  
Increase in ACNC registrations

**268**  
Groups and networks registered as charities

**1,070**  
Webinar engagements

**10**  
Group fundraising efforts matched

PROJECT

# Events

## PLANTING

*Planting was a day of collective community action and celebration, taking place across nine satellite planting locations across Melbourne in the morning and culminating at Fed Square in the afternoon on 7 September 2025.*

Inclement weather meant the postponement of two of the planting events – however these were successfully held later in the year. Collectively, the nine planting events mobilised over 360 volunteers who contributed over 1,000 hours and planted more than 10,400 native tubestock.

The project brought together the creative sector (Creative Climate), environmental stewards (Landcare Victoria and Melbourne Water), and place-makers (Melbourne Arts Precinct Corporation) to pioneer a new kind of partnership - uniting cultural programming with land-based climate care. By planting native species, restoring habitats and learning from First Nations knowledge holders, this collaboration contributed to a more biodiverse, inclusive and climate-resilient future.

Thank you to the following organisations that hosted a Planting event.

- Intrepid Landcare**
- Darebin Creek Management Committee**
- Cairnlea Conservation Reserves Committee of Management/Friends of Iramoo**
- Andersons Creek Landcare**
- Friends of Hillcroft Park**
- Port Phillip Eco Centre/Yalukit Willam Nature Reserve**
- Kooyongkoot Alliance**
- Merri Creek Management Committee**
- Macedon and Mt Macedon Landcare Group**



### FEEDBACK

“ It was a lovely way to connect with a spot along the creek that I’ve often walked past and to meet people while contributing to something important for the local environment. The event organisers were very welcoming and I liked that they were available to provide knowledge and advice.”

“ We planted over 3,000 grassland wildflowers. It is amazing how much can be achieved in a short space of time when there are lots of amazing and enthusiastic helpers - it makes the job a lot easier and more fun.”

“ We have recently moved into the area and were keen to connect with the community so thought this would be a good opportunity. Despite the howling winds and rain we managed to get all the plants into the ground. A truly excellent day of action.”

“ This was a wonderful experience! Coordinators and staff are super organised and amazingly friendly! Thank you!”

# Our communications

*Landcare Victoria is an influential voice for the Victorian landcare movement. We promote the value and achievements of Victorian landcare and amplify the voices of the landcare community through strong and innovative communication strategies.*

### Social media followers:

**f 9.4K**  
Facebook

**📷 4.7K**  
Instagram

**in 1,000**  
LinkedIn

**📧 2,058**  
Newsletter subscribers

### ENGAGEMENT

Throughout 2025, our communications shifted toward a more strategic and proactive approach, using meaningful storytelling to share more stories across platforms, boost engagement and better demonstrate impact across the state.

A key focus has been ensuring landcarers are well represented and that their interests are clearly and consistently advocated. We have also worked to grow recognition of the tangible value landcare delivers, while building greater awareness among members and partner organisations of both landcare's impact and the role of Landcare Victoria. This is reflected in the continued growth of our digital presence, including increased website traffic and stronger social media performance.

We had a substantial increase in engagement through our social media channels throughout 2025. Content shared on Facebook and Instagram was viewed more than 590,600 times. This equates to an 535% increase in engagement compared to 2024. This impressive statistic highlights that the information being shared across Landcare Victoria's social media channels continues to be relevant to our audience and is consistently drawing in a broader audience. Our website traffic also increased by 33%, with most users visiting the 'Find your local landcare group' page.

Our direct communications continue to perform strongly. Engagement with our newsletters and targeted email campaigns remains well above industry benchmarks for not-for-profit organisations. These channels are playing a key role in keeping our network informed and connected.

Throughout the second half of 2025, we began developing a Communications Strategy – a first for the organisation. This document is designed to support Landcare Victoria's strategic goal of empowering 120,000 Victorians to get involved in landcare by 2027.

In 2026 and beyond, we will continue to ensure landcarers are effectively represented and their interests advocated, and grow recognition of the tangible value that landcare delivers. We aim to increase communication efficiency and impact – shifting to a strategic, proactive approach that leverages meaningful storytelling and will share more stories across platforms to improve engagement and demonstrate impacts of landcare across the state.

**535%**

Increase in social media engagement



**590,000+**

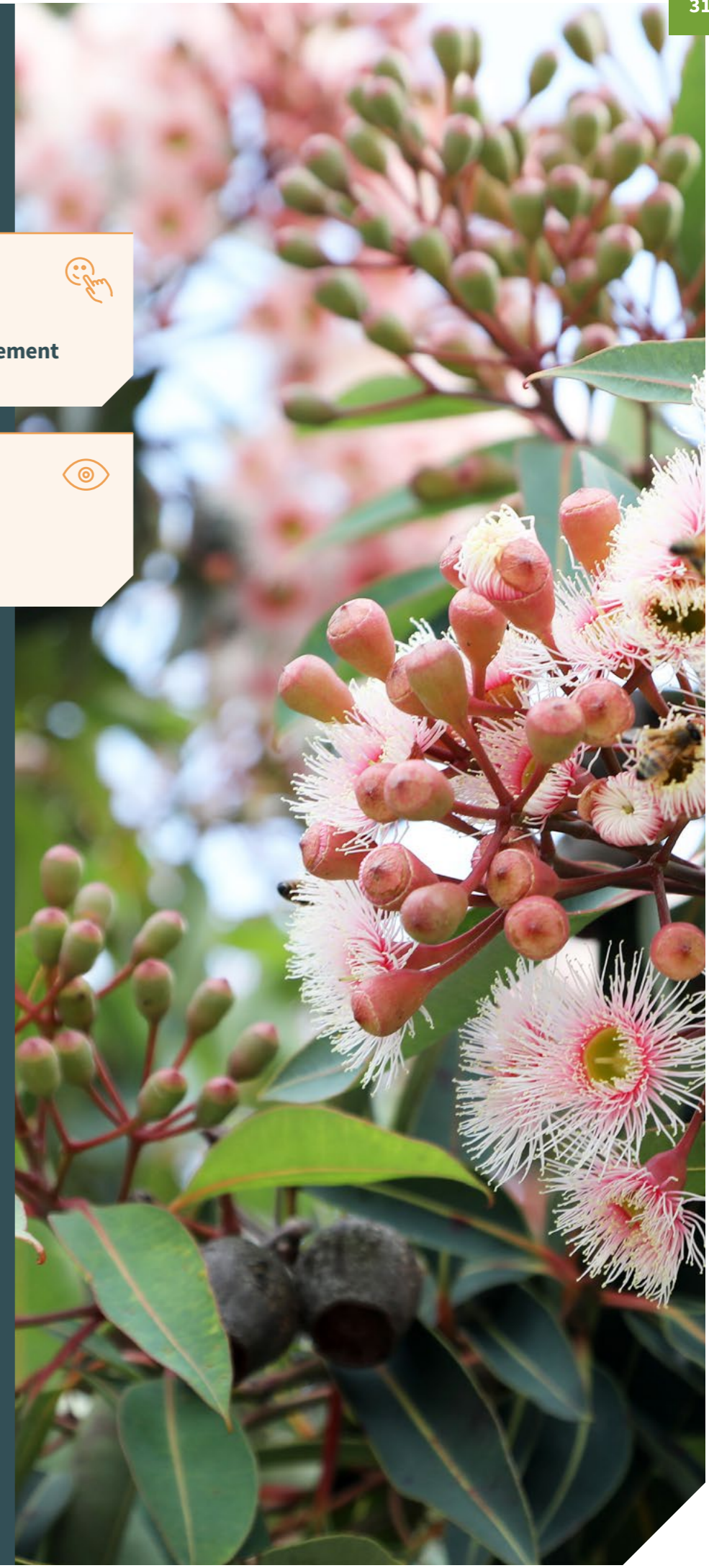
Views on social content



### MEDIA HIGHLIGHTS

Making news in 2025 was Landcare Victoria's ongoing advocacy for the Victorian Landcare Facilitator Program, and landcare more broadly. This includes the organisation's response to the State Budget, which saw \$17.3 million allocated to Landcare and Coastcare – a welcome investment. Another media highlight was coverage of the 2025 Landcare Victoria Twitchathon.

The voice of Victoria's landcare community was also featured in the news, from celebrating a local's lifelong commitment to landcare in Phillip Island, to Junior Landcare Grants helping school students develop their biodiversity program, and work being done to target pest species in South Gippsland.



# Treasurer's report

For the Year Ended 31 December 2025

## REVENUE

Total revenue for 2025 was **\$1,435,905**, a reduction of **\$68,805** compared to 2024 (**\$1,504,710**). While donations fell, this was partially offset by increases across membership subscriptions, grant income, interest, and the introduction of services income - reflecting a welcome diversification of the organisation's income base.

The philanthropic support of the Rendere Trust and Upotipotpon Foundation continued throughout the year. Landcare Victoria remains grateful for their ongoing generosity beyond their original commitment.

## EXPENDITURE

The Board continued to maintain close oversight of expenditure. The most significant cost remains staff salaries, wages and on-costs, which increased from **\$634,231** in 2024 to **\$786,459** in 2025. A substantial portion of this increase was attributable to new employees engaged to deliver project-funded programs.

Grant funds to partner organisations, totalling **\$310,025** (2024: **\$156,616**), represent delivery of major project commitments. Auspiced grants paid decreased from **\$135,029** to **\$72,458**, consistent with a corresponding reduction in auspiced grant income received. Insurance and professional services costs remained the next most significant items.

## OPERATING RESULT

The operating result for 2025 is a deficit of **\$285,831** (2024: surplus of **\$128,147**). This deficit is a direct result of expenditure of New Futures project funds, which had been received as donations in prior years and held in reserve, being drawn down during 2025.

Accordingly, this deficit reflects a planned and managed utilisation of restricted project reserves rather than a deterioration in underlying organisational performance.

## STATEMENT OF FINANCIAL POSITION

### Assets

Total assets grew by **\$144,636** to **\$1,345,190**, largely reflecting increased cash holdings of **\$1,176,372** (2024: **\$1,111,127**) driven by timing of project funding receipts, as well as an increase in trade receivables and other assets to **\$168,818**.

### Liabilities

Total liabilities increased by **\$430,467** to **\$1,053,028**, principally due to a significant increase in income received in advance (**\$856,852** vs **\$463,899** in 2024), representing grant funding already received for 2026 project delivery.

### Net Assets & Reserves

Net assets decreased by **\$285,831** to **\$292,162**, driven by the drawdown of the New Futures reserve (now fully expended). Importantly, the organisation's retained earnings - those reserves not tied to a specific project or purpose - increased substantially from **\$57,022** to **\$250,549**. This continues the Board's deliberate strategy to rebuild organisational reserves, supporting long-term financial sustainability, capacity to absorb unexpected costs, and confidence in meeting our obligations to members and the community.



**Ric Oldham**  
Treasurer

# Financial report

LANDCARE VICTORIA INC.



## LANDCARE VICTORIA INCORPORATED

### Committee's Report

#### Committee

The names of each person who has been a Committee member during the 2025 financial year are:

Abi Smith - Deputy Chair (Operations) from 28th May 2025  
 Alice Knight (resigned 28th May 2025)  
 Andrea Montgomery  
 Beth Ripper - Secretary until 28th May 2025 (resigned 28th May 2025)  
 Jane Carney - Chairperson  
 Kerri Robson  
 Leanne Jackman - Treasurer until 28th May 2025  
 Mark Feltrin (resigned 28th May 2025)  
 Mark Sutherland  
 Paul Foreman - Deputy Chair (Partnerships)  
 Ric Oldham - Deputy Chair (Operations) until 28th May 2025, Treasurer from 28th May 2025  
 Rob Spittle  
 Tiffany Inglis - Secretary from 28th May 2025

#### PRINCIPAL ACTIVITIES

The principal activities of the Association during the financial year were:  
 - to support environmental conservation and sustainable land management across Australia.

There have been no significant changes in the nature of the Association's principal activities during the financial year.

#### OPERATING RESULTS

The net deficit amounted to \$285,831 (2024: surplus \$128,147).

#### REVIEW OF OPERATIONS

A review of the operations of the Association during the financial year and the results of those operations found that the Association continued to engage in its principal activity, the results of which are disclosed in the attached financial statements.

#### SUBSEQUENT EVENTS

There are no matters or circumstances that have arisen since the end of the financial year which significantly affected or may significantly affect the operations of the Association, the results of those operations or the state of affairs of the Association in future financial years.

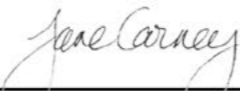
## LANDCARE VICTORIA INCORPORATED


### Committee's Report (cont'd)

#### SIGNIFICANT CHANGES IN STATE OF AFFAIRS

The Committee is not aware of any matter or circumstance not otherwise dealt with in this report that has significantly or may significantly affect the operations of the Association, the results of those operations or the state of affairs of the Association in subsequent financial years.

Signed in accordance with a resolution of the Committee:

  
 Dated: 6th March 2026

  
 Dated: 17th March 2026



**AUDITOR'S INDEPENDENCE DECLARATION  
TO THE MEMBERS OF LANDCARE VICTORIA INC.**

As auditor I declare that, to the best of my knowledge and belief, during the period ended 31 December 2025 there have been:

- no contraventions of the auditor independence requirements as set out in the Australian Charities and Not-for-Profits Commission Act 2012 in relation to this audit; and
- no contraventions of any applicable code of professional conduct in relation to this audit.

Stannards Accountants & Advisors

James Dickson  
Director

Date: 17<sup>th</sup> March 2026

**LANDCARE VICTORIA INCORPORATED**

**Statement of Surplus or Deficit and other Comprehensive Income  
for the Year Ended 31 December 2025**

	Note	2025 \$	2024 \$
Revenue	2	1,435,905	1,504,710
Bad debt expense		(10,166)	(23)
Donations		(190,185)	(43,780)
Employment expenses		(786,459)	(634,231)
Forum expenses		-	(48,424)
Grant funds to partner organisations		(310,025)	(156,616)
Grants paid		(72,458)	(135,029)
Insurance expense		(92,622)	(83,493)
IT expense		(39,009)	(30,572)
Professional services fees		(116,710)	(145,929)
Rental expense		(42,255)	(32,152)
Travel expense		(16,795)	(13,411)
Other expenses		(45,052)	(52,903)
<b>Surplus / (Deficit) Before Income Tax Expense</b>		<b>(285,831)</b>	<b>128,147</b>
Income tax expense		-	-
<b>Surplus / (Deficit) After Income Tax Expense</b>		<b>(285,831)</b>	<b>128,147</b>
Other comprehensive income for the year (net of tax)		-	-
<b>Total Comprehensive Income for the year attributable to the members</b>		<b>(285,831)</b>	<b>128,147</b>

The accompanying notes form part of these financial statements.

## LANDCARE VICTORIA INCORPORATED

Statement of Financial Position  
as at 31 December 2025

	Note	2025 \$	2024 \$
<b>Current Assets</b>			
Cash	6	1,176,372	1,111,127
Trade Receivables & Other Assets	3	168,818	89,427
<b>Total Current Assets</b>		<b>1,345,190</b>	<b>1,200,554</b>
<b>Total Assets</b>		<b>1,345,190</b>	<b>1,200,554</b>
<b>Current Liabilities</b>			
Trade & Other Payables	4	130,589	113,025
Income in advance		856,852	463,899
Provisions	5	43,052	34,140
<b>Total Current Liabilities</b>		<b>1,030,493</b>	<b>611,064</b>
<b>Non-Current Liabilities</b>			
Provisions	5	22,535	11,497
<b>Total Non-Current Liabilities</b>		<b>22,535</b>	<b>11,497</b>
<b>Total Liabilities</b>		<b>1,053,028</b>	<b>622,561</b>
<b>Net Assets</b>		<b>292,162</b>	<b>577,993</b>
<b>Equity</b>			
Reserves	7	41,613	520,971
Retained Earnings		250,549	57,022
<b>Total Equity</b>		<b>292,162</b>	<b>577,993</b>

The accompanying notes form part of these financial statements.

## LANDCARE VICTORIA INCORPORATED

Statement of Changes in Equity  
for the Year Ended 31 December 2025

	Gift Fund Reserve	Insurance Reserve Excess Pool	New Futures Reserve	Retained Earnings	Total
	\$	\$	\$	\$	\$
<b>Balance at 1 January 2024</b>	1,079	40,625	449,477	(41,335)	449,846
Surplus attributable to members	-	-	-	128,147	128,147
Allocation to / (from) reserves	4,615	-	25,175	(29,790)	-
<b>Balance at 1 January 2025</b>	5,694	40,625	474,652	57,022	577,993
(Deficit) attributable to members	-	-	-	(285,831)	(285,831)
Allocation to / (from) reserves	(4,706)	-	(474,652)	479,358	-
<b>Balance at 31 December 2025</b>	988	40,625	-	250,549	292,162

The accompanying notes form part of these financial statements.

## LANDCARE VICTORIA INCORPORATED

Statement of Cash Flows  
for the Year Ended 31 December 2025

	Note	2025 \$	2024 \$
<b>Cash Flows from Operating Activities</b>			
Cash receipts from customers		1,737,350	1,656,858
Cash payments to suppliers and employees		(1,681,188)	(1,517,205)
Interest received		9,083	11,380
<b>Net cash inflow from operating activities</b>	6(b)	65,245	151,033
<b>Net cash from investing activities</b>		-	-
<b>Net cash from Financing activities</b>		-	-
<b>Net increase in cash held</b>		65,245	151,033
Cash at beginning of financial year		1,111,127	960,094
<b>Cash at end of financial year</b>	6(a)	1,176,372	1,111,127

The accompanying notes form part of these financial statements.

## LANDCARE VICTORIA INCORPORATED

Notes To and Forming Part of the Financial Statements  
for the Year Ended 31 December 2025**1. STATEMENT OF MATERIAL ACCOUNTING POLICIES**

The Committee has prepared the financial statements on the basis that the Association is a non-reporting entity because there are no users dependent on general purpose financial statements. The financial statements are therefore special purpose financial statements that have been prepared in order to meet the requirements of the Associations Incorporation Reform Act 2012 and the Australian Charities and Not-for-profits Commission Act 2012. The Association is a not-for-profit entity for financial reporting purposes under Australian Accounting Standards.

The financial statements have been prepared in accordance with the recognition and measurement requirements specified by all Australian Accounting Standards and Interpretations, and the disclosure requirements that are mandatory under the Australian Accounting Standards applicable to entities reporting under the Associations Incorporation Reform Act 2012, the Australian Charities and Not-for-profits Commission Act 2012 and the significant accounting policies disclosed below, which the Committee have determined are appropriate to meet the needs of members. Such accounting policies are consistent with the previous period unless stated otherwise.

The financial statements, except for the cash flow information, have been prepared on an accrual basis and are based on historical costs unless otherwise stated in the notes. The amounts presented in the financial statements have been rounded to the nearest dollar.

**Revenue**

Revenue is measured at the fair value of consideration received or receivable and is recognised when (or as) the Association satisfies a performance obligation or when control of funds is obtained, as appropriate.

Membership subscription income is recognised over the period to which the membership relates. Where membership fees are invoiced in advance of the membership service period, the portion relating to future periods is recognised as a contract liability (income in advance) and recognised as revenue progressively over the membership term.

Grant income is assessed to determine whether it gives rise to a reciprocal transaction. Reciprocal grants (where the Association is required to transfer goods or services to the grantor or another specified party) are recognised as revenue as performance obligations are satisfied. Amounts received in advance of performance are recognised as a liability (income in advance). Non-reciprocal grants (where there are no sufficiently specific performance obligations) are recognised as income when the Association obtains control of the funds, provided any eligibility criteria have been satisfied.

Donations and sponsorship income without sufficiently specific performance obligations are recognised as revenue when received or when the Association obtains control of the funds. Where sponsorship arrangements include identifiable performance obligations, revenue is recognised as those obligations are satisfied.

Revenue from the provision of services is recognised over time as the services are performed, by reference to the stage of completion of the contract.

Interest income is recognised using the effective interest method as it accrues.

**Income Tax**

The association is exempt from income tax under item 9.1 of Section 50-45 of the ITAA 97.



## LANDCARE VICTORIA INCORPORATED

### Notes To and Forming Part of the Financial Statements for the Year Ended 31 December 2025 (cont'd)

	2025 \$	2024 \$
<b>6 NOTES TO THE STATEMENT OF CASH FLOWS</b>		
<b>(a) Reconciliation of Cash</b>		
Cash at the end of the financial year as shown in the statement of cash flows is reconciled to the related items in the statement of financial position as follows:		
Cash at Bank	1,176,372	1,111,127
<b>(b) Reconciliation of Net Cash provided by Operating Activities to Operating Surplus or Deficit</b>		
Deficit from ordinary activities	(285,831)	128,147
<i>Non cash flows in the statement of surplus or deficit</i>		
Bad debt expense	10,166	-
<i>Change in Operating Assets &amp; Liabilities:</i>		
(Increase)/decrease in trade receivables and prepayments	(89,557)	(11,995)
(Decrease)/increase in payables and income received in advance	410,517	15,744
(Decrease)/increase in provision for employee entitlements	19,950	19,137
Net cash from / (used in) operating activities	65,245	151,033

### 7 RESERVES

#### (a) Gift Fund Reserve

This fund is the Victorian Landcare Fund that receives tax deductible donations.

#### (b) Insurance Reserve

Under the terms of Landcare Victoria Inc's agreement with its members to provide insurance, an event, of which the Association has not yet been informed, may have occurred which will result in a future outflow of funds. The committee has created a reserve to cover two types of potential obligations arising which are: excesses payable on claims made, which are self-insured, and future events incurred for which claims have not yet been made. The value of the reserve has been determined using the history of claims and the experience and judgement of the committee members.

#### (c) New Futures Reserve

The New Futures Reserve holds the balance of donations paid to the Association that are tied to be spent on the New Futures for Victorian Landcare Project.

## LANDCARE VICTORIA INCORPORATED

### The Committee's Declaration

The officers of the Committee have determined that the Association is not a reporting entity and that this special purpose financial report should be prepared in accordance with the accounting policies described in Note 1 to the financial statements.

The officers of the Committee declare that:

- 1 The financial statements and notes are in accordance with the Associations Incorporation Reform Act 2012 and Australian Charities and Not-for-profits Commission Act 2012;
  - (a) Comply with Accounting Standards as described in Note 1 to the financial statements; and
  - (b) Give a true and fair view of the financial position as at 31 December 2025 and of its performance for the year ended on that date in accordance with the accounting policies described in Note 1 of the financial statements.
- 2 In the officer's opinion, there are reasonable grounds to believe that the Association will be able to pay its debts as and when they become due and payable.

This declaration is made in accordance with a resolution of the Committee and in accordance with subsection 60.15(2) of the Australian Charities and Not-for-profit Commission Regulations 2022.



Title Chairperson



Title Treasurer

Dated: 6th March 2026



**Independent Audit Report  
To the Members of Landcare Victoria Inc**

**Report on the Audit of the Financial Report**

**Opinion**

We have audited the accompanying financial report, being a special purpose financial report, of Landcare Victoria Inc ("the Association"), which comprises the statement of financial position as at 31 December 2025, the statement of surplus or deficit and other comprehensive income, the statement of changes in equity and the statement of cash flows for the year then ended and notes to the financial statements, including a summary of material accounting policies, and the Committee's declaration.

In our opinion the financial report of the Association is properly drawn up, including:

- a. giving a true and fair view of the Association's financial position as at 31 December 2025 and of its financial performance for the year ended; and
- b. complying with Australian Accounting Standards to the extent described in Note 1 and with the Associations Incorporation Reform Act 2012 and Division 60 of the Australian Charities and Not-for-Profits Commission Act 2012 (ACNC Act).

**Basis for Opinion**

We conducted our audit in accordance with Australian Auditing Standards. Our responsibility under those standards is further described in the Auditor's Responsibilities for the Audit of the Financial Report section of our report. We are independent of the Association in accordance with the ethical requirements of the Accounting Professional and Ethical Standards Board's APES 110 Code of Ethics for Professional Accountants (the Code) that are relevant to our audit of the financial report in Australia. We have also fulfilled our other responsibilities in accordance with the Code.

We believe that the audit evidence we have obtained is sufficient and appropriate to provide a basis for our audit opinion.

**Emphasis of Matter - Basis of Accounting**

Without modifying our opinion, we draw attention to Note 1 of the financial report, which describes the basis of accounting. The financial report has been prepared for distribution to members for the purpose of fulfilling the Committee's financial reporting responsibilities under the Associations Incorporation Reform Act 2012 and the ACNC Act. As a result, the financial report may not be suitable for another purpose.

**Committee's Responsibility for the Financial Report**

The Committee of the Association is responsible for the preparation of the financial report that gives a true and fair view and have determined that the basis of preparation described in Note 1 to the financial report is appropriate to meet the requirements of the Associations Incorporation Reform Act 2012 and the ACNC Act. The Committee's responsibility also includes establishing and maintaining internal controls relevant to the preparation and fair presentation of the financial report that is free from material misstatement, whether due to fraud or error.

In preparing the financial report, the Committee is responsible for assessing the Association's ability to continue as a going concern, disclosing, as applicable, matters related to going concern and using the going concern basis of accounting unless the Committee either intends to liquidate the Association or to cease operations, or have no realistic alternative but to do so.

Those charged with governance are responsible for overseeing the Association's financial reporting process.



**Independent Audit Report  
To the Members of Landcare Victoria Inc (cont'd)**

**Auditor's Responsibilities for the Audit of the Financial Report**

Our objectives are to obtain reasonable assurance about whether the financial report as a whole is free from material misstatement, whether due to fraud or error, and to issue an auditor's report that includes our opinion. Reasonable assurance is a high level of assurance, but is not a guarantee that an audit conducted in accordance with Australian Auditing Standards will always detect a material misstatement when it exists. Misstatements can arise from fraud or error and are considered material if, individually or in the aggregate, they could reasonably be expected to influence the economic decisions of users taken on the basis of this financial report.

A further description of our responsibilities for the audit of the financial report is located at the Auditing and Assurance Standards Board website at: <http://www.auasb.gov.au/Home.aspx>. This description forms part of our auditor's report.

Stannards Accountants and Advisors

James Dickson  
Director  
Date: 17<sup>th</sup> March 2026

landcarevictoria.org.au



**Landcare**  
Victoria Inc.

# Annual Report 2026

**CONTACT US:** (03) 9034 1940 | [info@landcarevictoria.org.au](mailto:info@landcarevictoria.org.au) | PO Box 509, Flinders Lane VIC 8009